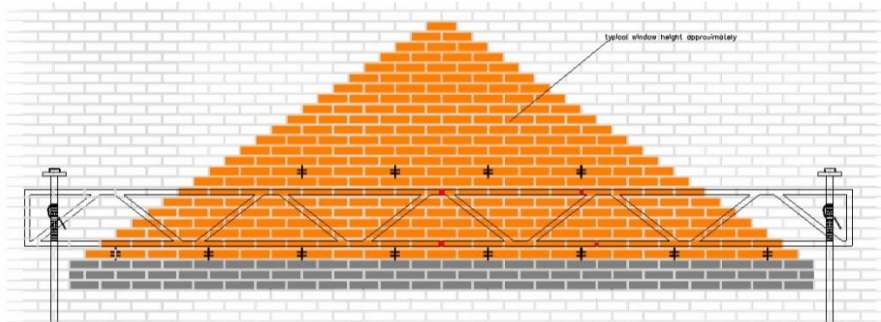




Designed to stabilise the unknown lateral strength of a structure and to provide superior fitting/working access; used upon suitable openings up to 5,400mm when using a 6-metre aluminium scaffold beam over the opening.



5400mm opening (24 brick)
Brick wall – Stretcher Bond

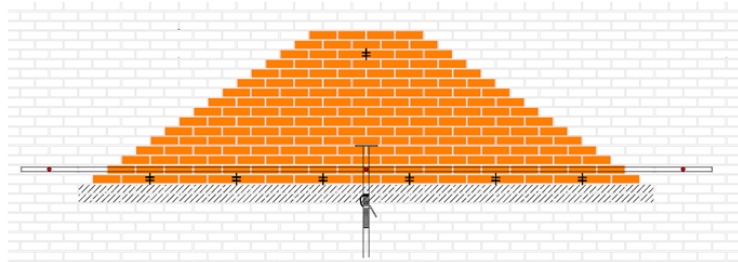
To be read in conjunction with the Brick Brace instruction and guidance leaflets

Mark out the exact position, height and length onto the wall. For the position of couplers to fit the aluminium beam measure & mark for six pilot holes; two at a minimum of 150mm past both sides of the permanent support opening and one central at a height of 120mm above the opening and three further pilot holes 400mm directly above the lower three for the top tube fixing.

At both ends fit suitable sized Acrow props and connect both top and bottom onto the inner tube of the Acrow prop using band and plate single couplers. Place the provided hooks over & onto the lower tube directly to the left side of the required joints.

Important; Ensure not to remove any perp joints until knowing that all hooks can be fitted at the specified joints due to the occasional obstruction of the welded angled latices of the aluminium beam, reducing the distance between tools when required. Brick Brace safety tools are fitted within the course directly above the proposed opening at a maximum of 3 brick apart in a cement mortar mix and a maximum 2.5 brick apart in a weak or lime mortar mix.

Further Option; For suitable openings of up to 4,500mm using one Acrow prop fitted central and clipped to the horizontal scaffolding tube with a band & plate single coupler.



We recommend using the Brick Brace safety system to stabilise the structure in conjunction with props and needles when fitting steels over 5,400mm in length especially within lime mortar masonry; this method provides sufficient and safer fitting/working access.

www.brickbrace.com